

Project Cost Summary

Engineer's Repair Report **\$30,000** estimated

If approved, may lead to

Ditch Repair **\$200,000** estimated

If approved, may lead to

Ditch System Redetermination **\$175,000** estimated

Details about each project on the following pages.

All costs would be in paid for by the property owners who are determined to participate in the CD28 system. All costs are estimates and are expected to change.

Engineer's Repair Report

The decision for the County Commissioners acting as the CD28 Drainage Authority is whether or not to approve an Engineer's Repair Report project at an estimated cost of **\$25,000** to **\$30,000** which would be paid for by the property owners in the CD28 system. Approval of this project may lead to additional projects and cost.

Requires Board of Commissioner approval before moving forward

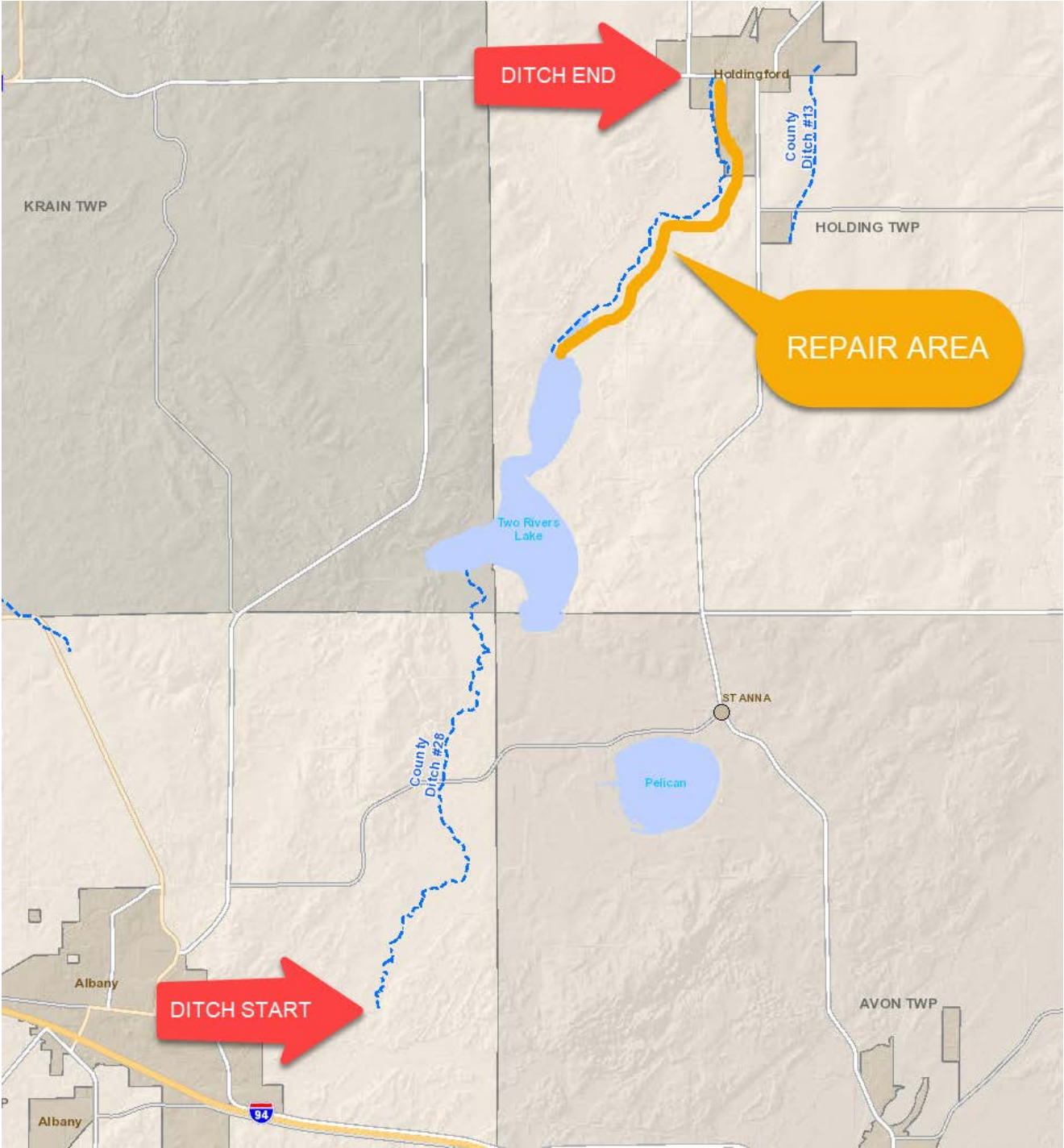
Ditch Repair

If an Engineer's Repair Report project is completed, the next decision would be to approve a ditch repair. The ditch repair is excavation of accumulated sediment and other debris in the ditch. The repair would occur from Two Rivers Lake Outlet to Co Rd 17 in Holdingford (2.8 miles). The repair is based on the information detailing the ditch bottom in the <Engineer's Re-establishment Report>.

Repair cost is estimated using a standard of \$5 a linear foot. With Engineering, legal, and tree removal costs, the repair is very roughly estimated at **\$200,000**. The Engineer's Repair Report would provide a much more accurate cost estimate. Because of the high cost, approval of a repair project may also lead to consideration of a Drainage System Redetermination Project.

Requires Board of Commissioner approval before moving forward

Ditch Repair Project Location



Drainage System Redetermination

CD28 was originally established in 1906. At that time, a team of ditch viewers determined who benefitted from the ditch being established. Over the past 114 years, a lot has changed and with more water in the area than ever before, it is expected that determining what property owners utilize the ditch in 2020 will be much larger than the current system boundary. Below is a map that shows the CD28 watershed, which shows the area that sends water to CD28. We expect a redetermined ditch system to resemble the watershed. Each property owner in the new ditch boundary would be responsible for all costs incurred by the ditch system. A preliminary estimate to redetermine the ditch system is **\$175,000**.

Requires Board of Commissioner approval before moving forward

